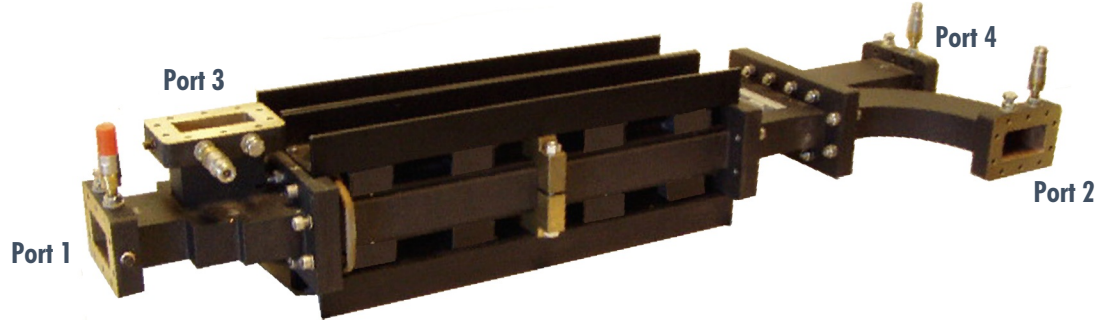




High Average Power Four Port Waveguide Circulator

Model 102574



Product Overview

This high power S band circulator is attractive for isolating reflection from resonant loads such as accelerators or other similar devices. This circulator is set for the 2.998 GHz frequency but can be readily optimized for other frequencies, including 2.856 GHz.

Note that every power input, Ports 1, 2, 3 and 4 have two variable insertion E field probes (at each one) for monitoring and/or control signals. These probes can be varied from the nominal 60 db coupling. Typically, in isolator applications, a good high power load (such as our Model RQ284-3.0) should be attached to receive the reflected power.

This circulator is broadband, yet has very good narrow band specifications. Our customers are pleased with the improved system performance achieved by this design.

Unit Specifications

Peak Power	15 MW	Frequency Band	2.998 (+/- 0.010) GHz
Average Power	35 KW		
Flanges	CPR284F	VSWR (Port 1)	1.10 max
Water Flow	4 GPM		
Water Temperature	25° to 40° C (selectable)	Isolation (Port 1 to Port 4) (Port 1 to Port 3)	> 38 db > 32 db
Gas Pressure	35 PSIG SF ₆		
Length	1035 mm	Insertion (Port 1 to Port 2)	< 0.2 db
Probe Connector	Type N Female		

22661 Hwy 62
Shady Cove, OR 97539
541-878-3927
Fax: 541-878-3937
www.em-design.com
hjohnson@em-design.com

UNIQUE SOLUTIONS. EXCEPTIONAL PERFORMANCE.

 **EM DESIGN**.LLC